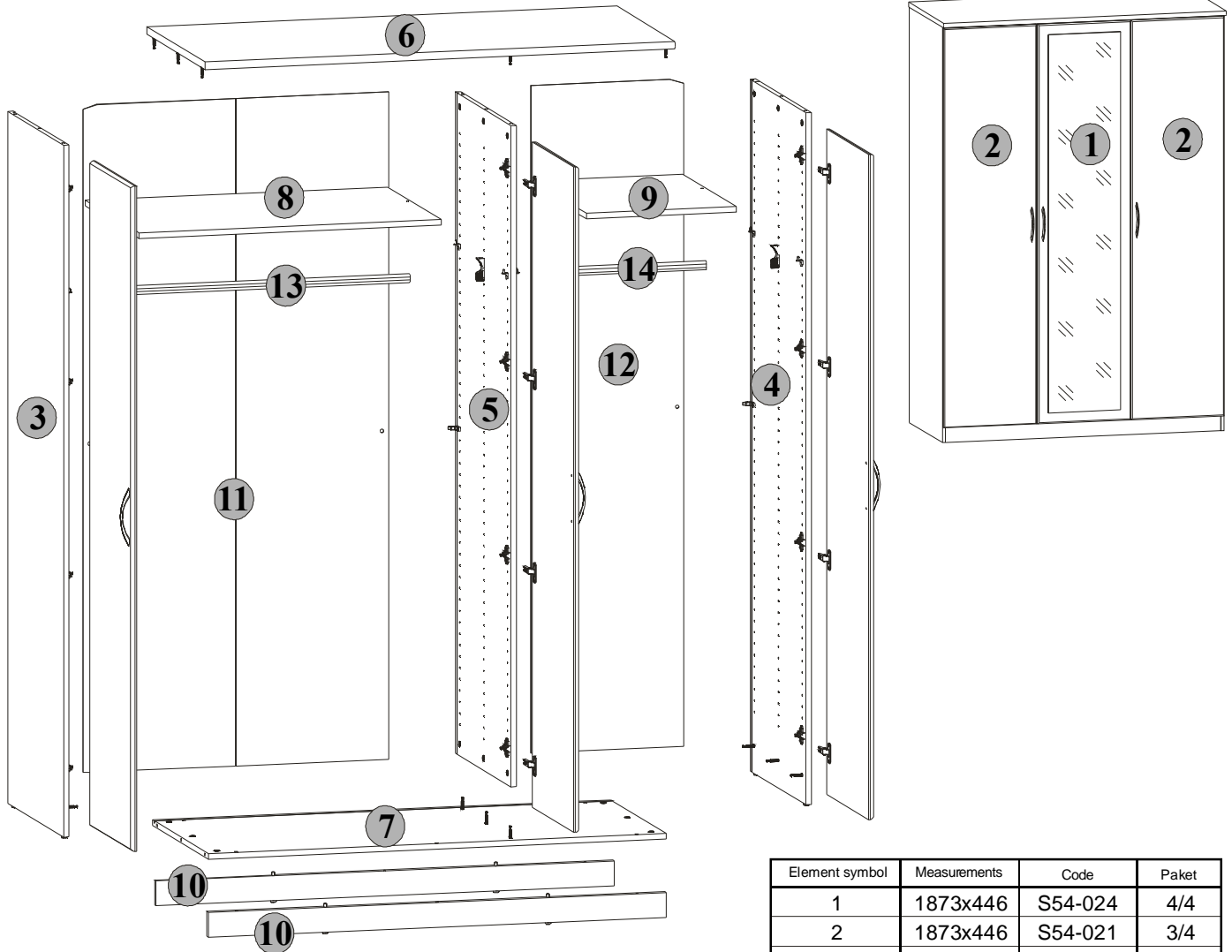


# THE ASSEMBLY MANUAL,

**Attention:** Before you start the assembly, please get acquainted with the entire assembly manual and stick to the order of assembly presented in this manual.

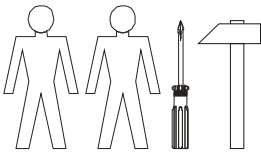
## TOLEDO RANGE

## TOL3W

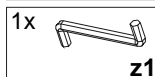
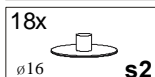
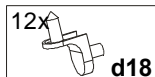
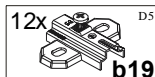
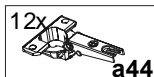
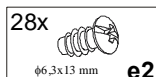
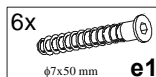
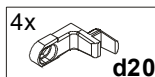
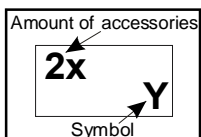


| Element symbol | Measurements | Code    | Paket |
|----------------|--------------|---------|-------|
| 1              | 1873x446     | S54-024 | 4/4   |
| 2              | 1873x446     | S54-021 | 3/4   |
| 3              | 1948x595     | S54-115 | 1/4   |
| 4              | 1948x595     | S54-116 | 1/4   |
| 5              | 1862x595     | S54-124 | 1/4   |
| 6              | 1351x625     | S54-211 | 2/4   |
| 7              | 1317x595     | S54-313 | 2/4   |
| 8              | 870x574      | S54-314 | 2/4   |
| 9              | 431x574      | S54-316 | 2/4   |
| 10             | 1317x70      | S54-411 | 2/4   |
| 11             | 1879x878     | S54-916 | 1/4   |
| 12             | 1879x439     | S54-917 | 1/4   |
| 13             | 857x24       | dr-857  | 2/4   |
| 14             | 418x24       | dr-418  | 2/4   |

You need for fitting-up:



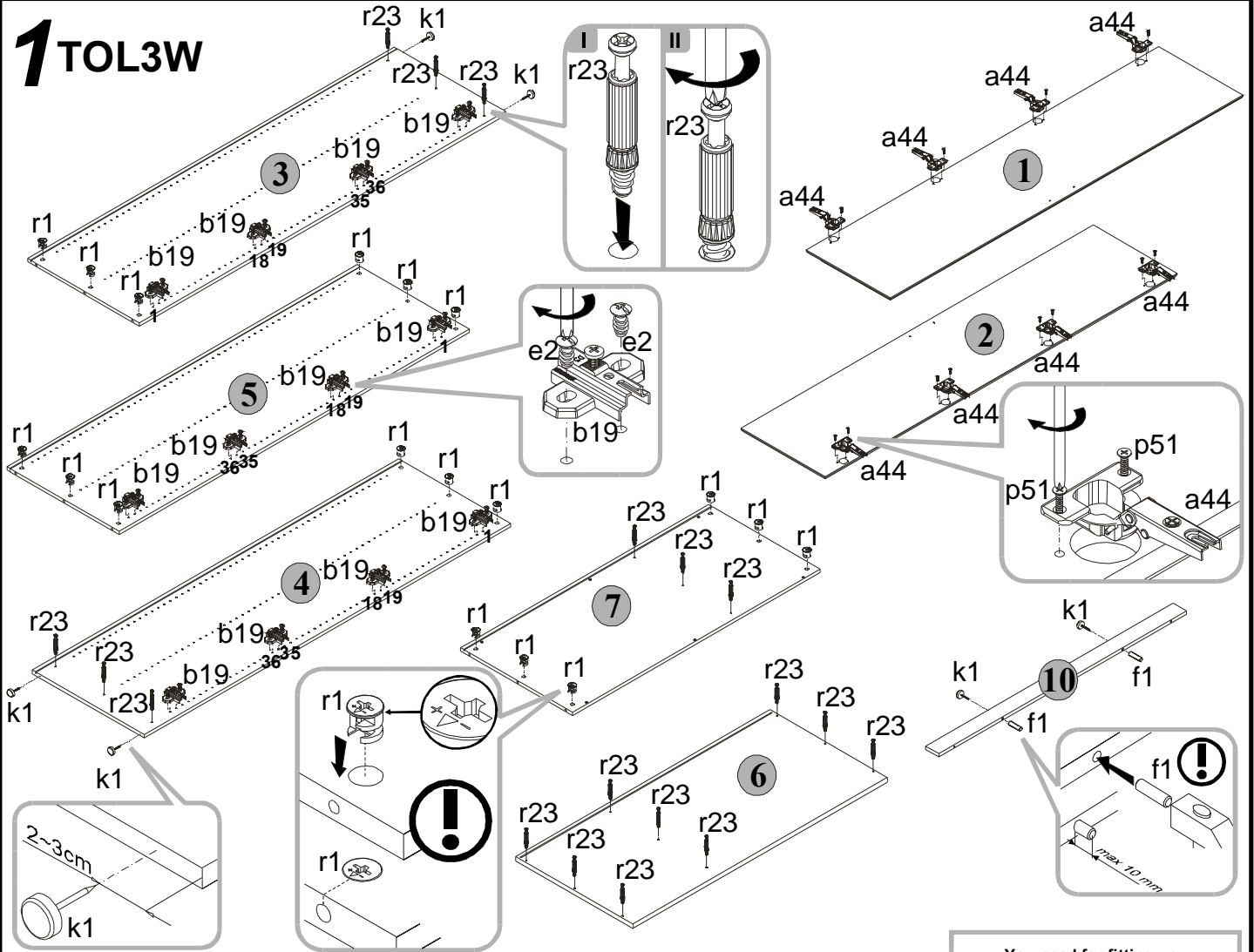
The symbols and the amount of accessories needed for the assembly have been presented below. The accessories can be found in the "Accessories" package.





The first stage of the assembly is equipping the elements with the appropriate accessories according to the drawings below. The Ⓞ symbols denote places to which special attention should be paid during the assembly.

# 1 TOL3W

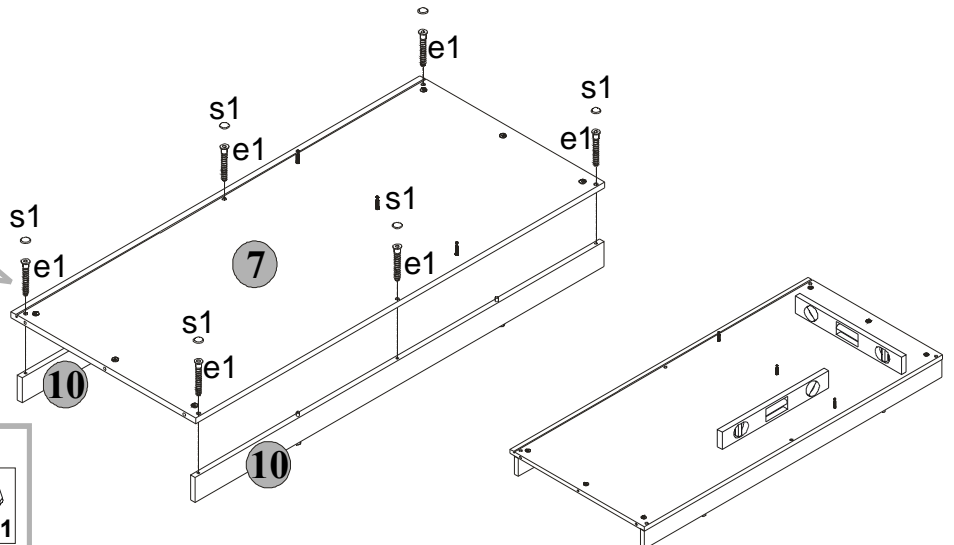
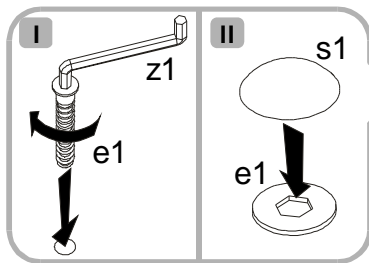


- You need for fitting-up:**
- 12x a44
  - 12x b19
  - 24x e2
  - 4x f1
  - 18x r1
  - 18x r23
  - 8x k1
  - 24x p51



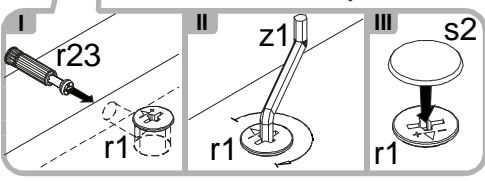
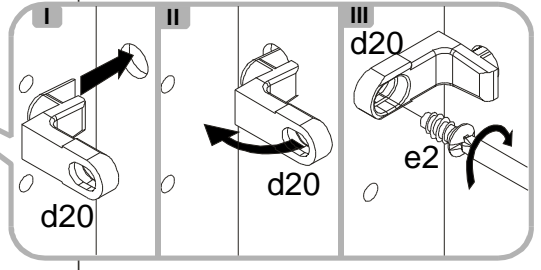
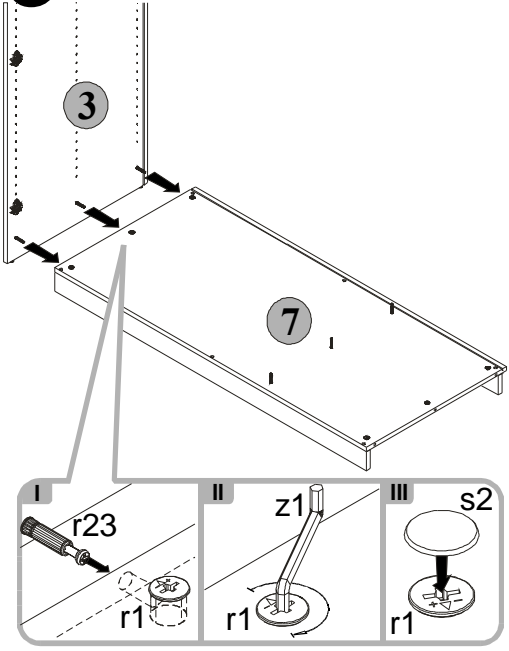
Assemble the unit as shown in the pictures using indicated connectors and/or joints.

# 2 TOL3W



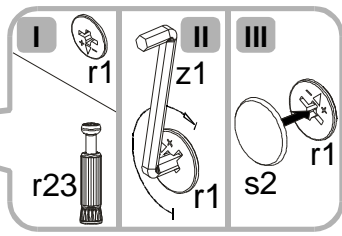
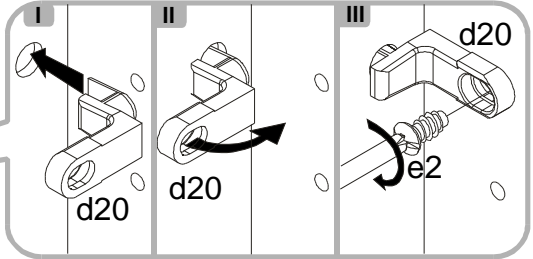
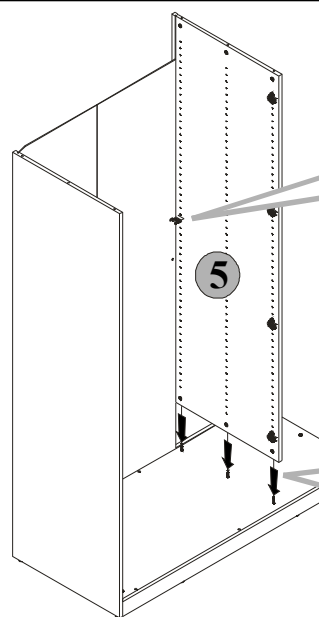
- You need for fitting-up:**
- 6x e1
  - 6x s1
  - 1x z1

# 3 TOL3W



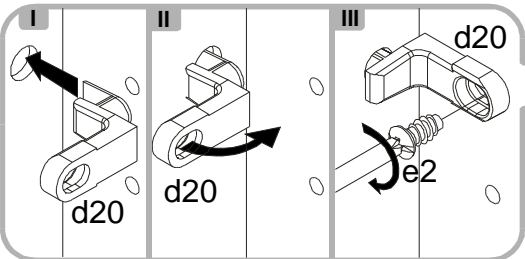
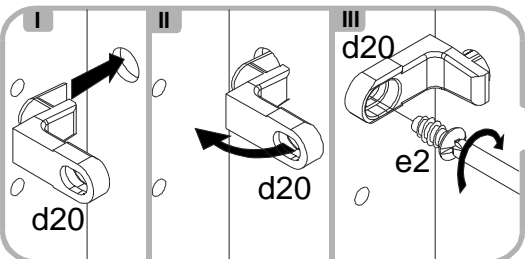
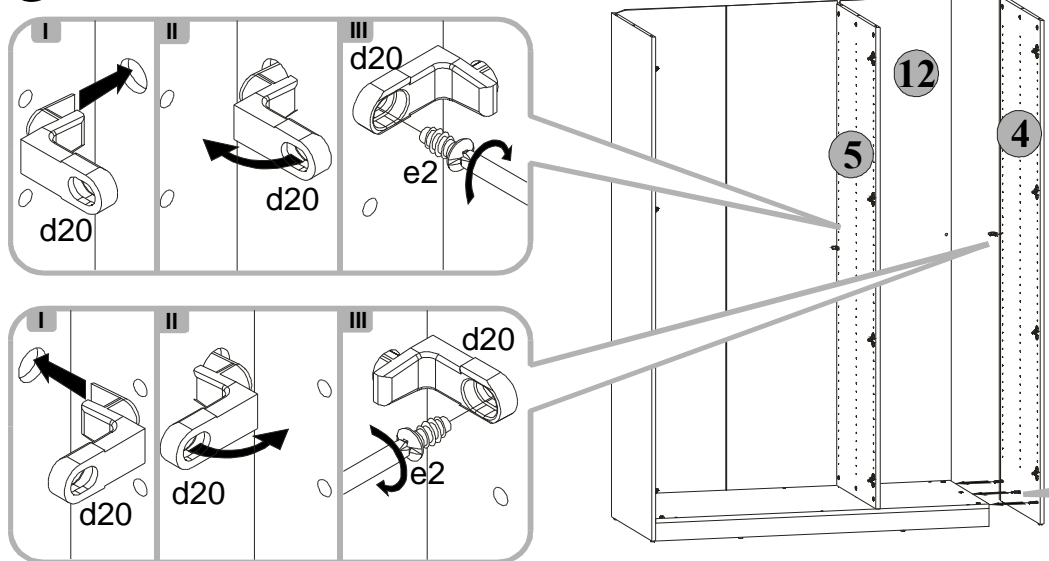
- You need for fitting-up:**
- |           |        |
|-----------|--------|
| 1x  d20   | 1x  e2 |
| 3x  s2    | 1x  z1 |
| $\phi 16$ |        |

# 4 TOL3W

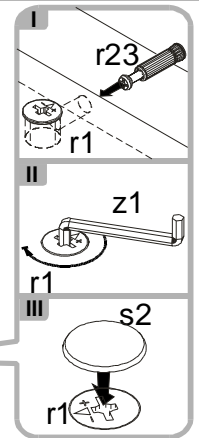


- You need for fitting-up:**
- |           |        |
|-----------|--------|
| 1x  d20   | 1x  e2 |
| 3x  s2    | 1x  z1 |
| $\phi 16$ |        |

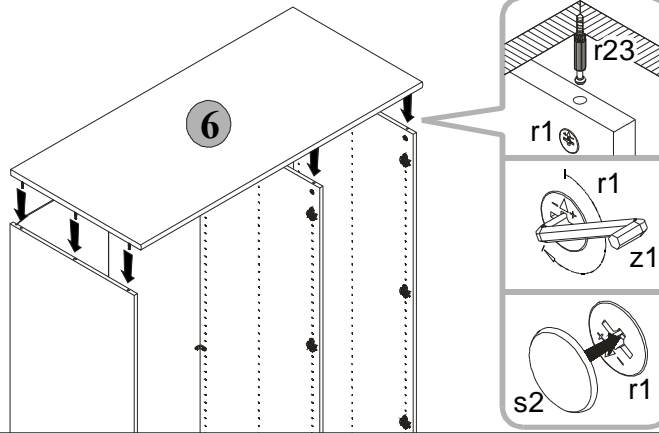
# 5 TOL3W



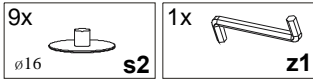
- You need for fitting-up:**
- |           |        |
|-----------|--------|
| 2x  d20   | 2x  e2 |
| 3x  s2    | 1x  z1 |
| $\phi 16$ |        |



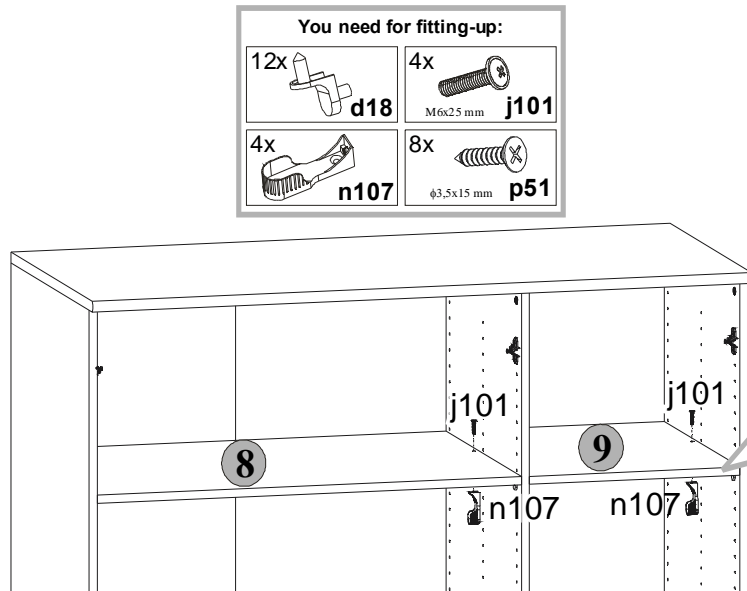
# 6 TOL3W



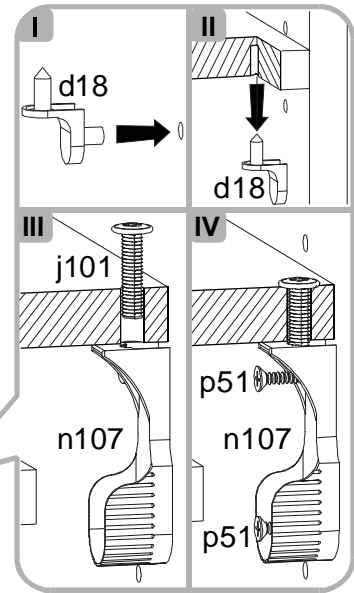
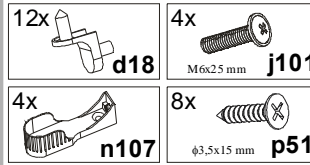
You need for fitting-up:



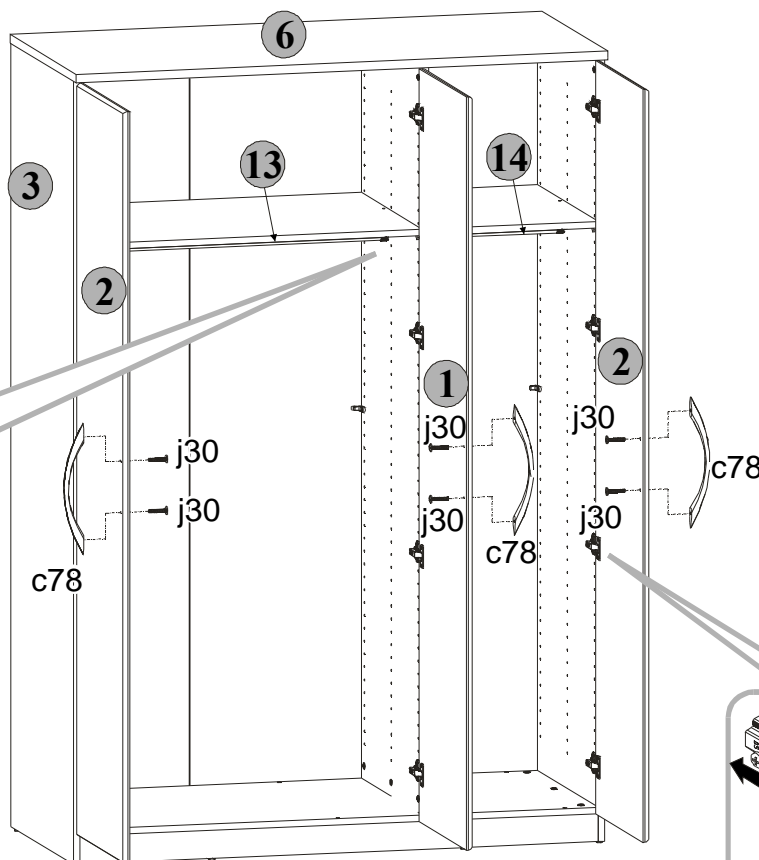
# 7 TOL3W



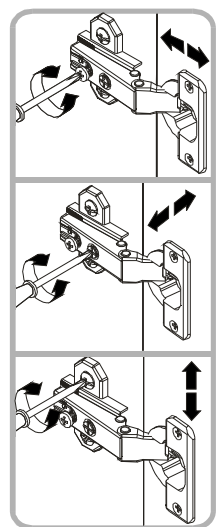
You need for fitting-up:



# 8 TOL3W



Adjustment of door



You need for fitting-up:

