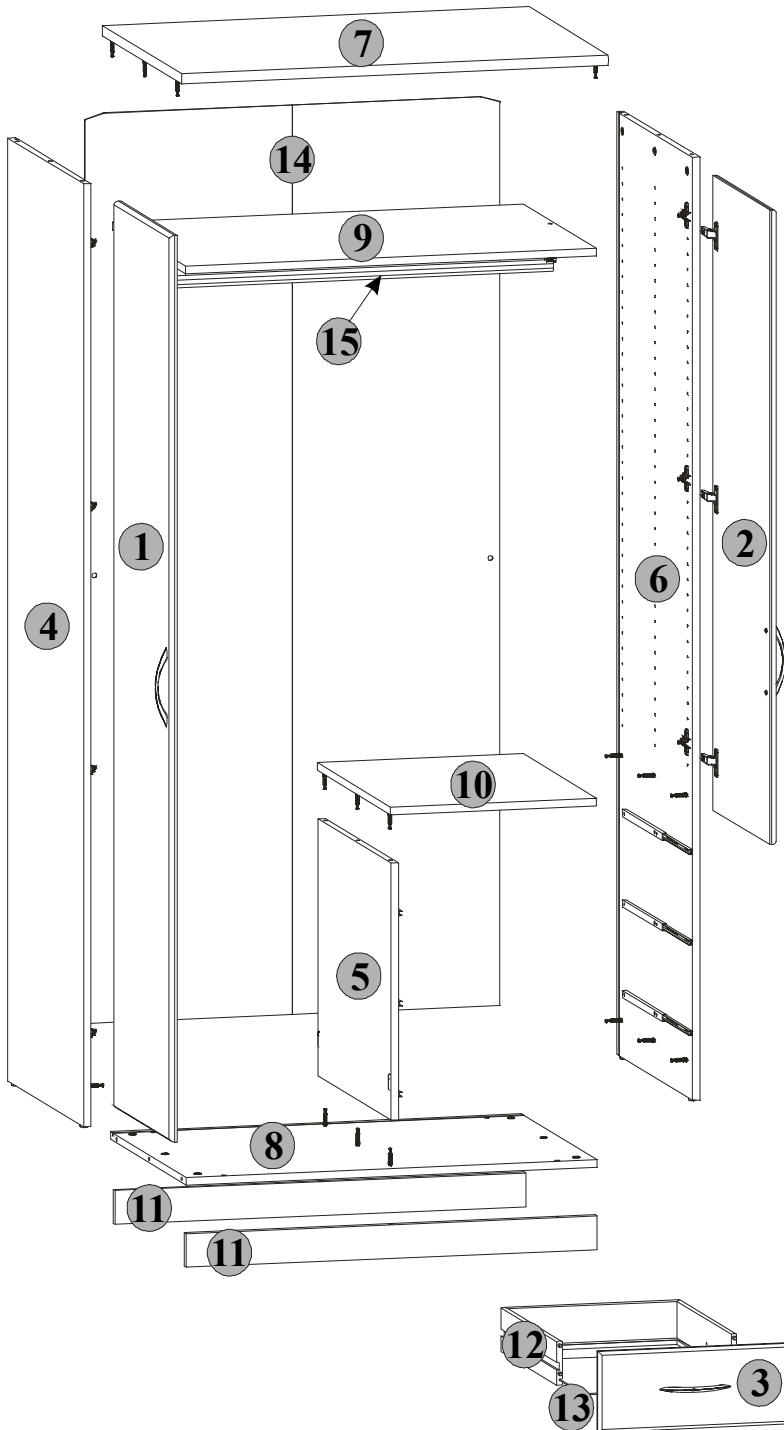


THE ASSEMBLY MANUAL,

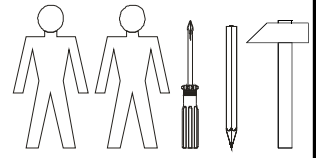
Attention: Before you start the assembly, please get acquainted with the entire assembly manual and stick to the order of assembly presented in this manual.

TOLEDO RANGE

TOL5W



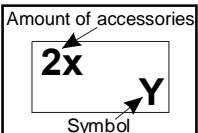
You need for fitting-up:



Element symbol	Measurements	Code	Paket
1	1873x446	S54-021	4/4
2	1311x446	S54-022	3/4
3	446x184	S54-023	4/4
4	1948x595	S54-115	1/4
5	531x575	S54-118	2/4
6	1948x595	S54-123	1/4
7	900x625	S54-210	2/4
8	866x595	S54-310	2/4
9	866x574	S54-311	2/4
10	435x575	S54-312	2/4
11	866x70	S54-410	2/4
12	1371x100	S54-524	1/4
13	397x481	S54-912	1/4
14	1879x875	S54-923	1/4
15	853x24	dr-853	2/4



The symbols and the amount of accessories needed for the assembly have been presented below. The accessories can be found in the "Accessories" package.



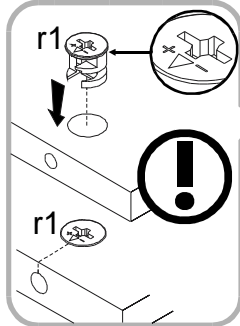
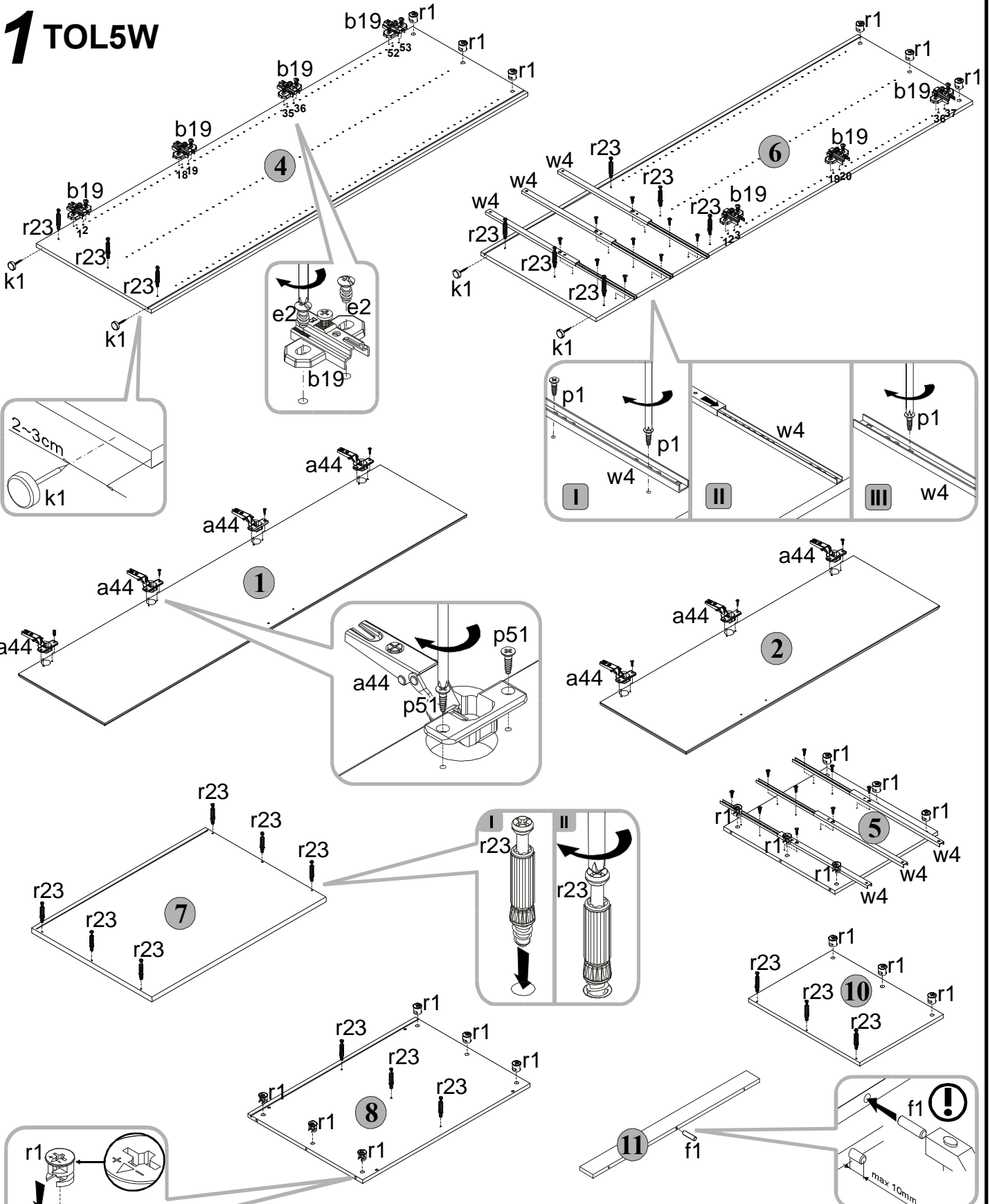
5x c78	6x d18	2x d20	4x e1 φ7x50 mm	16x e2 φ6,3x13 mm	14x f1 φ8x30 mm	7x a44	7x b19 D5
10x j30 M4x22 mm	2x j101 M6x25 mm	4x k1	10x l1	2x n107	18x p1 φ3,5x13 mm	6x j2 M4x9 mm	18x p51 φ3,5x15 mm
21x r1 φ15x12mm #16	21x r23 30/11	2x s1	10x s2 φ16	6x w4 310 mm	1x y1 OLUB	1x z1	

<p>☑ TASMÁ ZABEZPEČAČKA</p> <p>☑ ОБЕЗОПАСИТЕЛЬНАЯ ЛЕНТА</p> <p>☑ ZAŠTŮJICI PASKA</p> <p>☑ DAS SICHERU</p> <p>☑ BANDE DE SURETE</p> <p>☑ THE ANTI-TOPPLE DEVICE</p> <p>☑ ZAŠTĚNÁ TRAKA</p> <p>☑ BIZTOSÍTÓ SZALAG</p> <p>☑ BANDA DE SIGURANTA</p> <p>☑ ПРЕДОХРАНИТЕЛЬНАЯ ЛЕНТА</p> <p>☑ ОХРАНИТЕЛЬНАЯ ПЛЕНКА</p>
<p>1x p38</p> <p>1x n26</p>



The first stage of the assembly is equipping the elements with the appropriate accessories according to the drawings below. The Ⓞ symbols denote places to which special attention should be paid during the assembly.

1 TOL5W



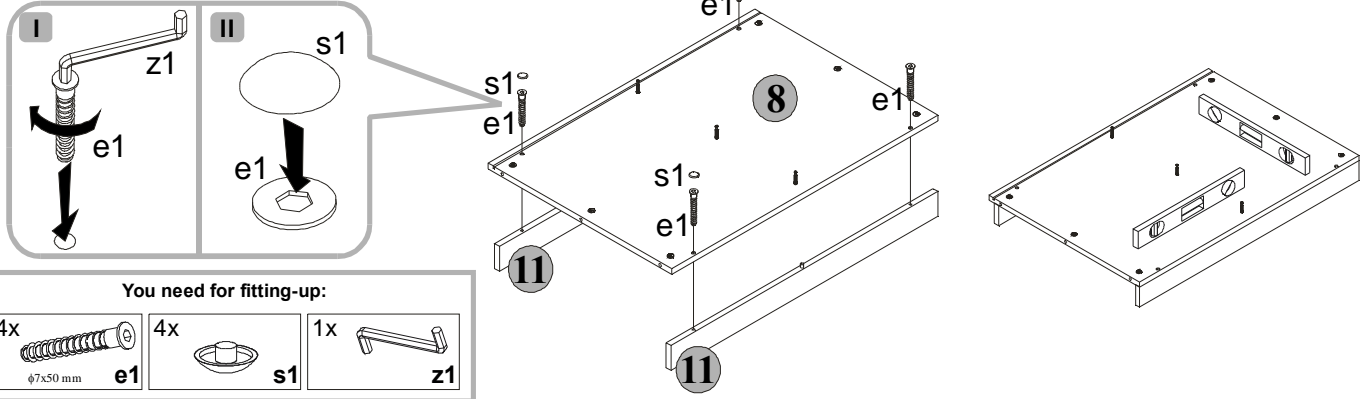
You need for fitting-up:

21x φ15x12mm #16 r1	21x 30/11 r23	4x k1	7x a44	7x D5 b19	14x φ6,3x13 mm e2	2x φ8x30 mm f1
			18x φ3,5x13 mm p1	14x φ3,5x15 mm p51	6x 310 mm w4	

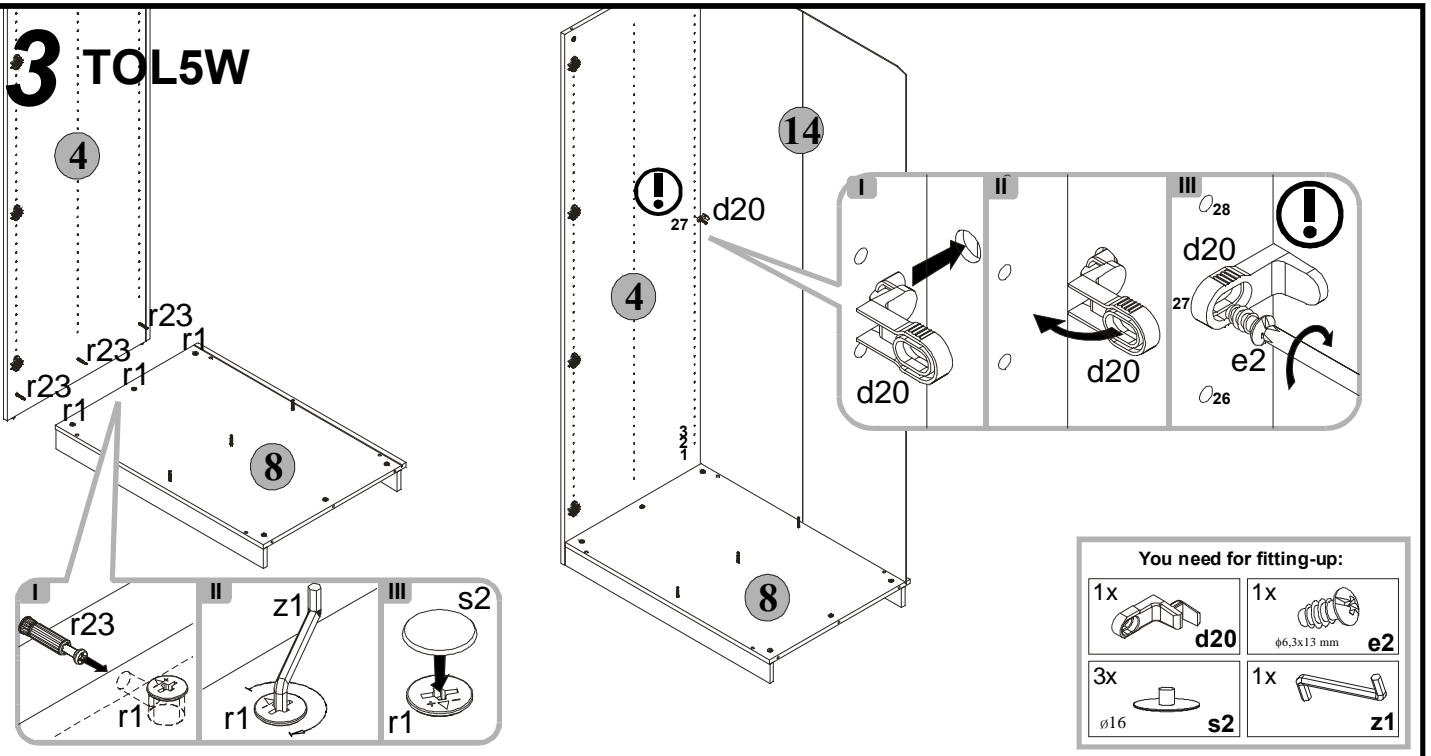


Assemble the unit as shown in the pictures using indicated connectors and/or joints.

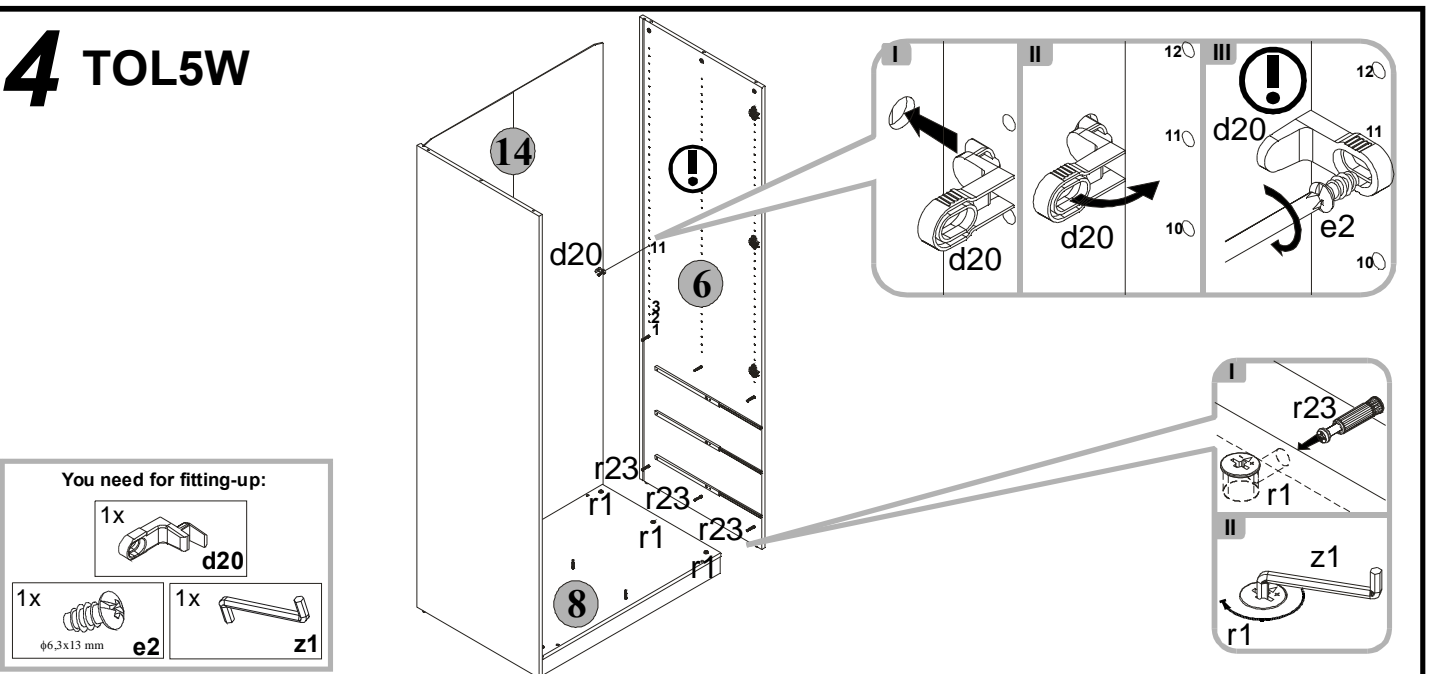
2 TOL5W



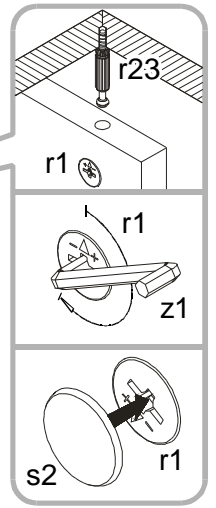
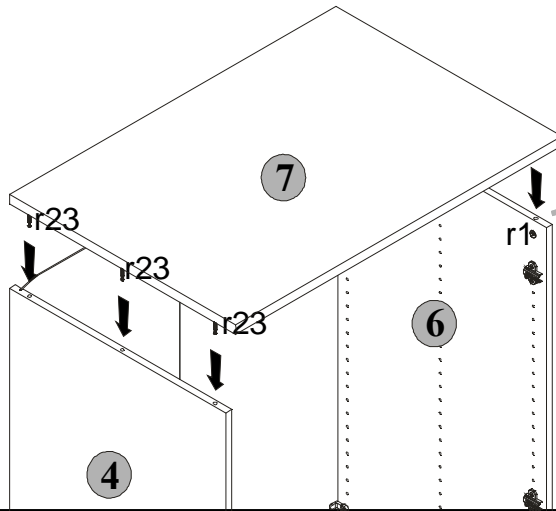
3 TOL5W



4 TOL5W



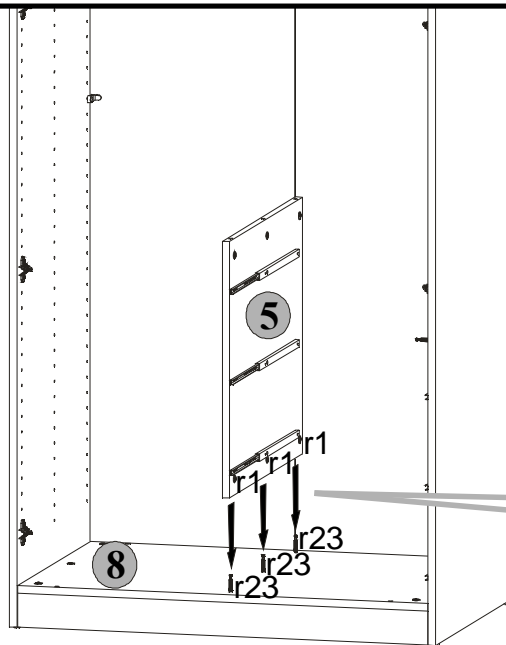
5 TOL5W



You need for fitting-up:

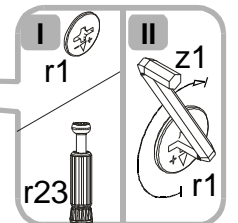
6x ø16 s2	1x z1
-----------------	----------

6 TOL5W

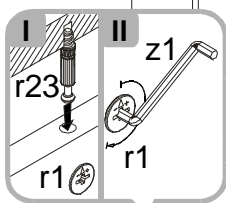
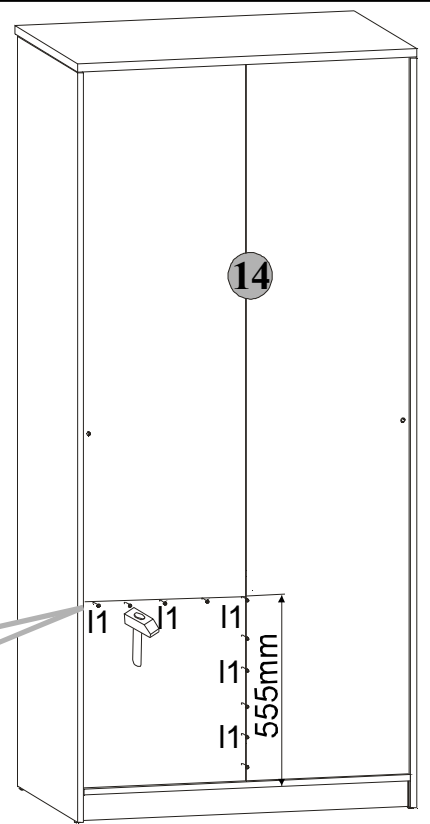
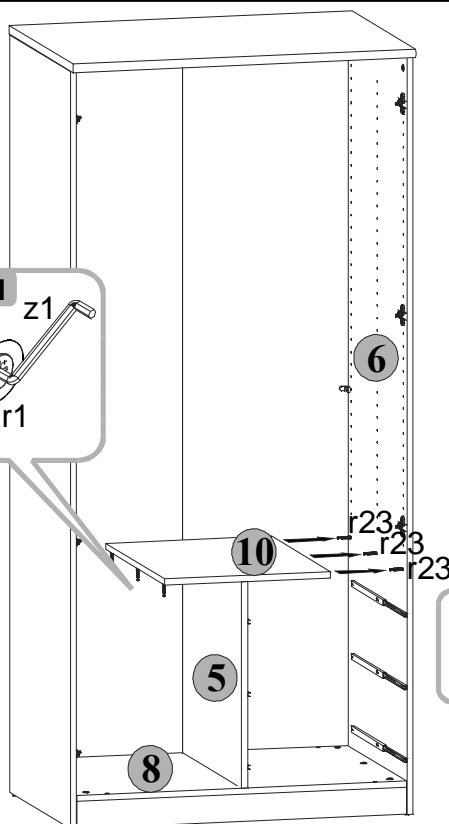


You need for fitting-up:

1x z1

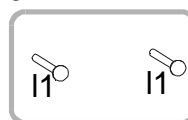


7 TOL5W



You need for fitting-up:

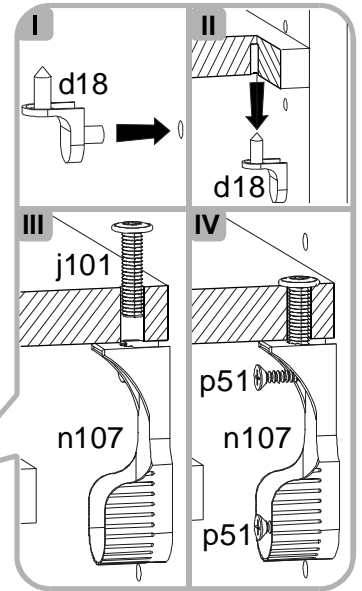
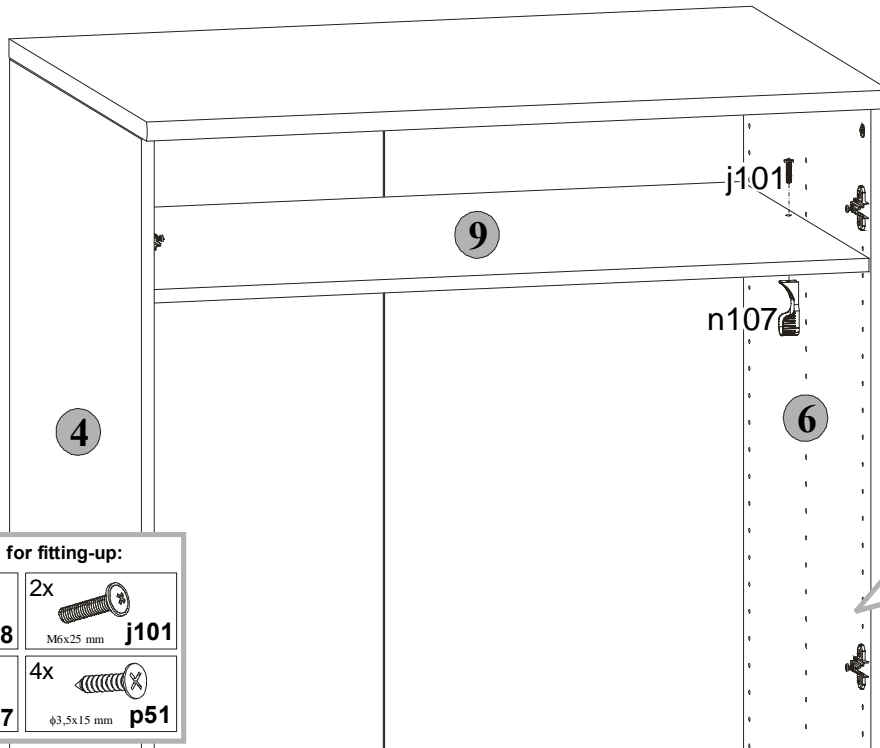
10x l1
1x ø16 s2
1x z1







14

555mm

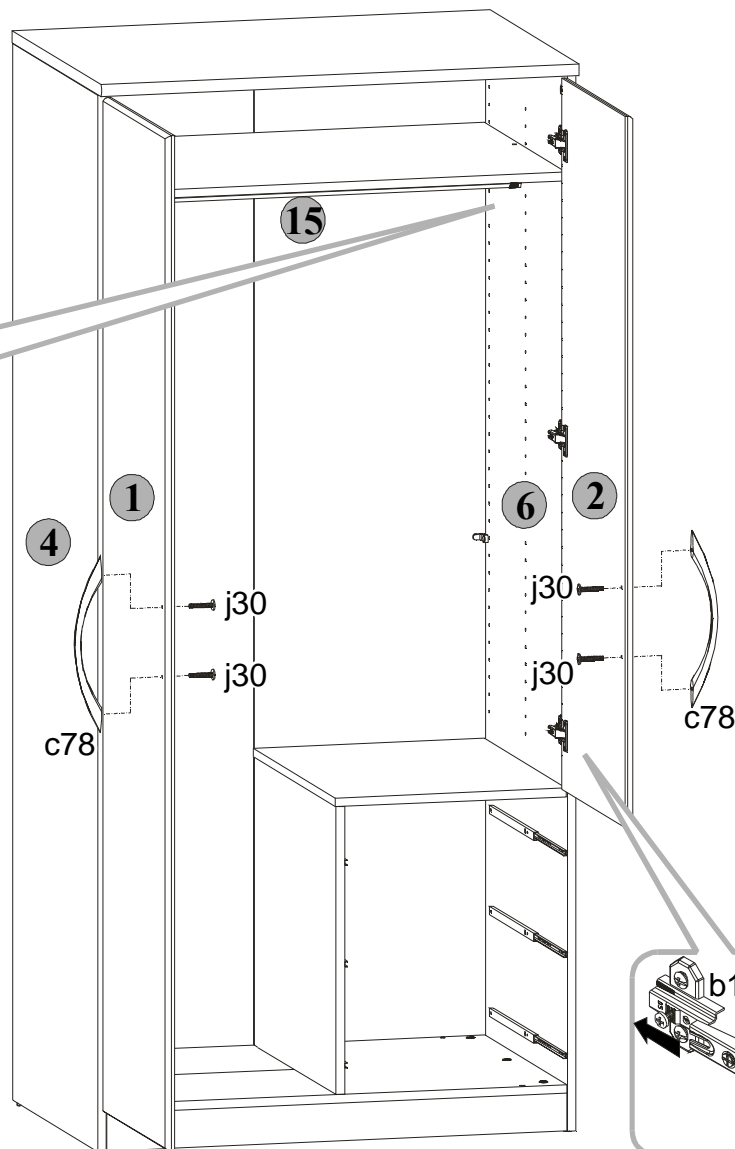
8 TOL5W



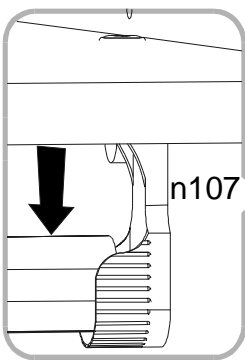
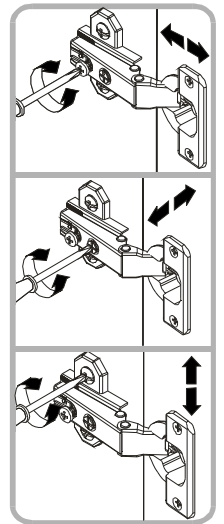
You need for fitting-up:

6x  d18	2x  M6x25 mm j101
2x  n107	4x  φ3,5x15 mm p51



9 TOL5W

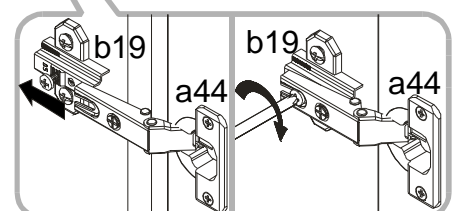


Adjustment of door



You need for fitting-up:

2x  c78
4x  M4x22 mm j30



10 TOL5W



Attention: The assembly of the drawer should be done very carefully in order to avoid damaging the delicate joints of the drawer band.



Place **y1** glue in the holes in the component shown, mount the component and leave while the glue dries.

I

You need for fitting-up:

- 12x $\phi 8 \times 30$ mm **f1**
- 1x **GLUE** **y1**

II

You need for fitting-up:

- 1x **GLUE** **y1**

III

IV

You need for fitting-up:

- 3x **c78**
- 6x M4x22 mm **j30**
- 1x **GLUE** **y1**

11 TOL5W

You need for fitting-up:

- 6x M4x9 mm **j2**