

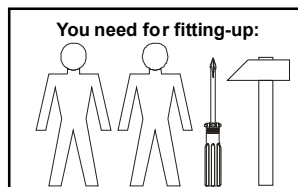
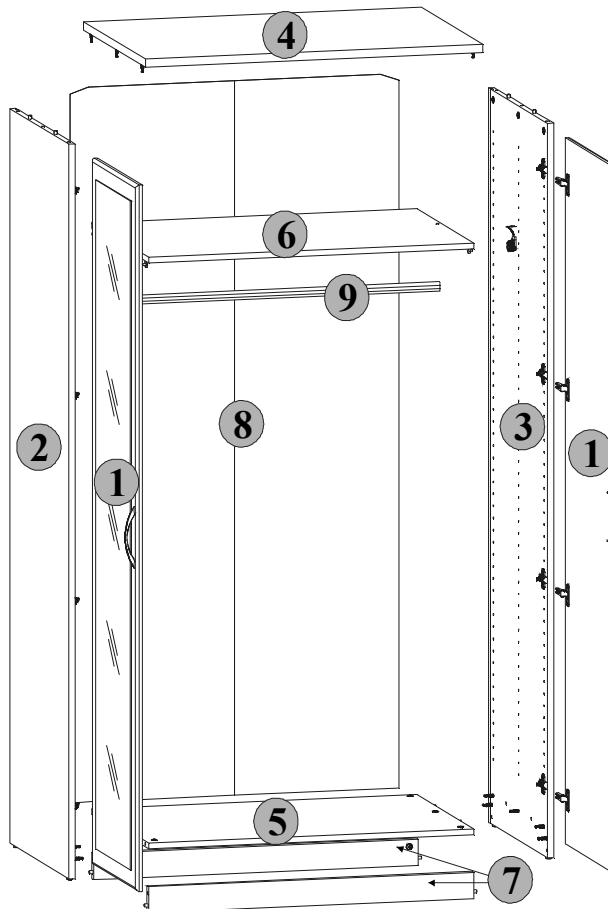
THE ASSEMBLY MANUAL

Attention: Before you start the assembly, please get acquainted with the entire assembly manual and stick to the order of assembly presented in this manual.

TOLEDO RANGE

Wardrobe 2d

Element symbol	Measurements	Code	Paket
1	1873x452	S44-028	3/3
2	1948x595	S44-115	1/3
3	1948x595	S44-116	1/3
4	914x625	S44-206	2/3
5	880x575	S44-302	2/3
6	880x574	S44-321	2/3
7	880x70	S44-407	2/3
8	1891x889	S44-913	1/3
9	867x24	dr-867	2/3



The symbols and the amount of accessories needed for the assembly have been presented below. The accessories can be found in the "Accessories" package.

Amount of accessories

Symbol $2x \leftarrow Y$

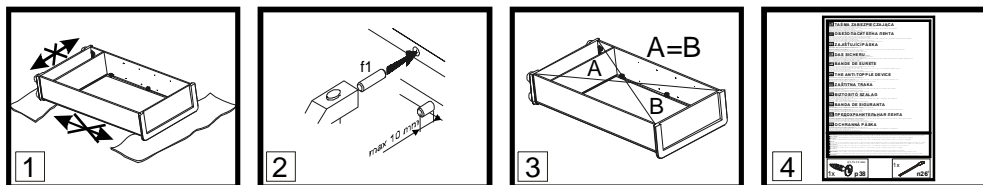
6x d18	16x e2 φ6,3x13 mm	12x f1 φ8x30 mm	4x j30 M4x22 mm	8x a44	8x b19 D5	2x c78
2x n107	6x p38 φ3,5x16 mm	20x p51 φ3,5x15 mm	16x r1 φ15x12mm #16	16x r16	4x k1	18x l2
					6x s2 φ16	1x z1

1x p38	1x n26
---------------	---------------

1x TASMA ZABEZPEČAČKA
1x ROZESORUJĄCA PASKA
1x ZAJISTIJUĆI PASKA
1x DAS SICHERU
1x BANDA DE SURETE
1x THE ANTI-TOPPLE DEVICE
1x ZÁŠTĚNÁ TRAKA
1x BIZTOSÍTÓ SZALAG
1x BANDA DE SIGURANTA
1x ПРЕДОХРАНИТЕЛЬНАЯ ЛЕНТА
1x OCHRANNÁ PÁSKA

General instructions for furniture assembly

Attention



Attention:

1. During the assembly, the elements should be put on a soft and clean surface, e.g. a towel or a blanket. Do not assemble the piece on a carpet or floor covering, etc.
 2. Drive **f1** pegs into the holes (8 mm in diameter) located along the edges of each element (leave the holes for the eccentric connector pivot free). **Attention:** In case a peg in one of the holes protrudes more than 10 mm, it should be hammered down, exchanged or shortened because it may cause damage to the side of the piece of furniture during its assembly.

3. Before nailing a fiberboard, make sure that the diagonals are equal.

4. The anti-topple device. When assembling the furniture follow the instructions in the manual. Improper fixing of the piece of furniture may cause it to topple when it is used.

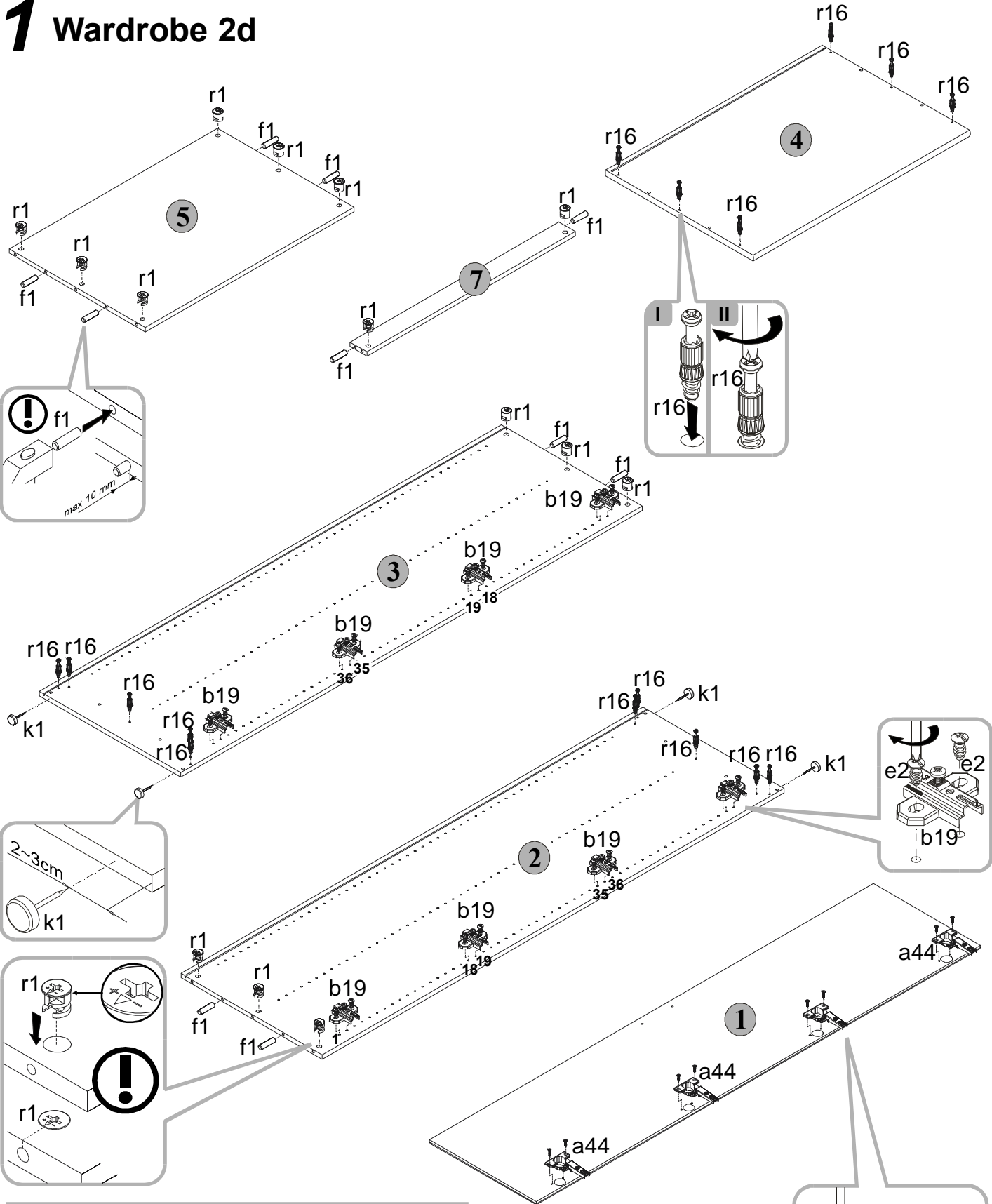
INFORMATION!

Dear client, in case of complaining, please use the code number given in the assembly instruction. Any comments and complaints should be reported at the furniture purchase outlet. **Note!** Do not use any parts showing any faults or marks of damage.

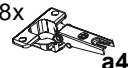


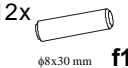
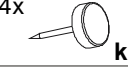


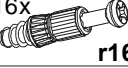


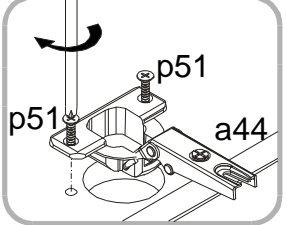
The first stage of the assembly is equipping the elements with the appropriate accessories according to the drawings below. The Ⓞ symbols denote places to which special attention should be paid during the assembly.

1 Wardrobe 2d



You need for fitting-up:

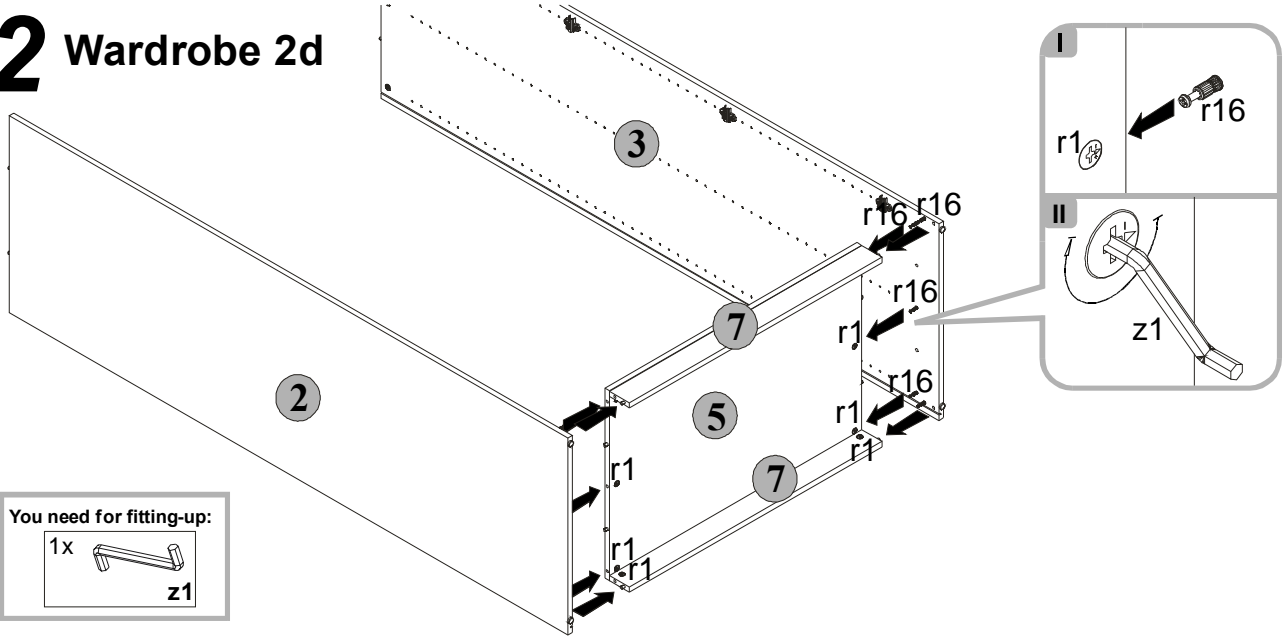
8x  a44	8x  b19	16x  e2 φ6,3x13 mm	12x  f1 φ8x30 mm
4x  k1	16x  p51 φ3,5x15 mm	16x  r1 φ15x12mm #16	16x  r16



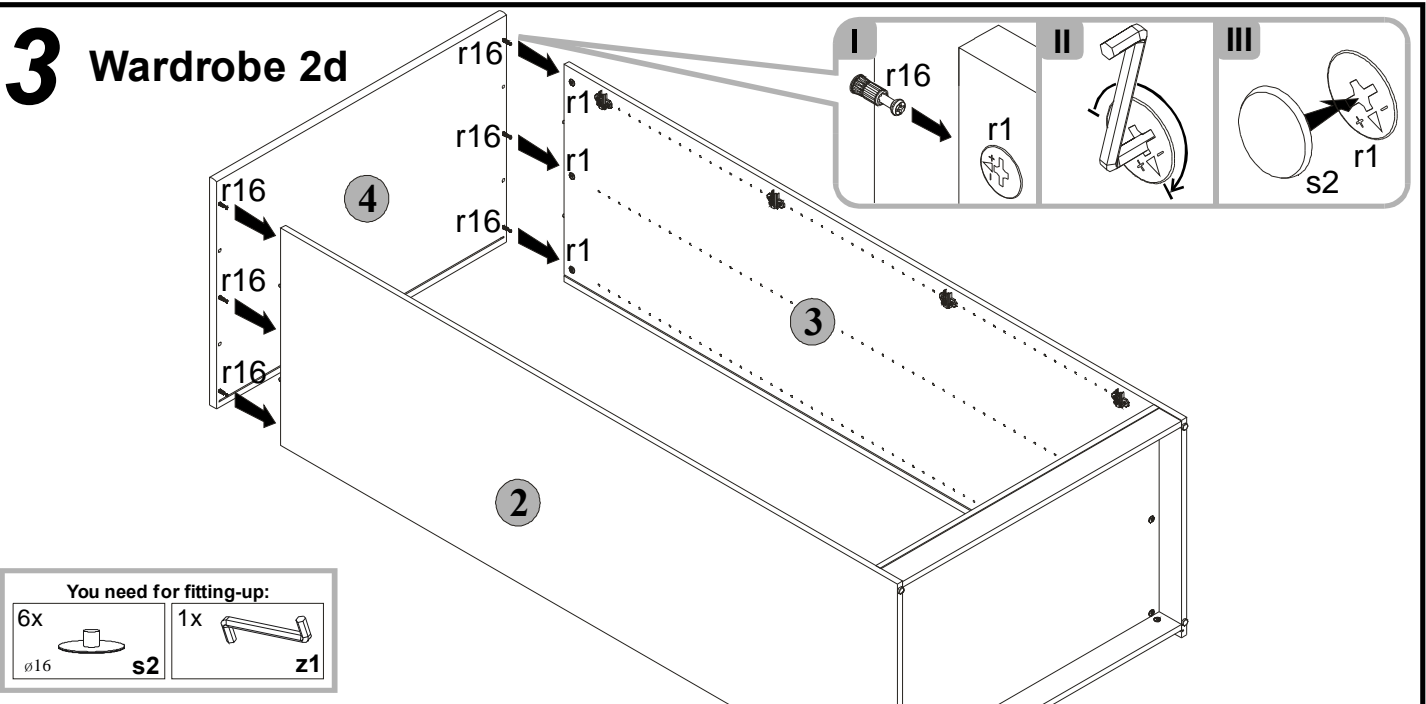


Assemble the unit as shown in the pictures using indicated connectors and/or joints.

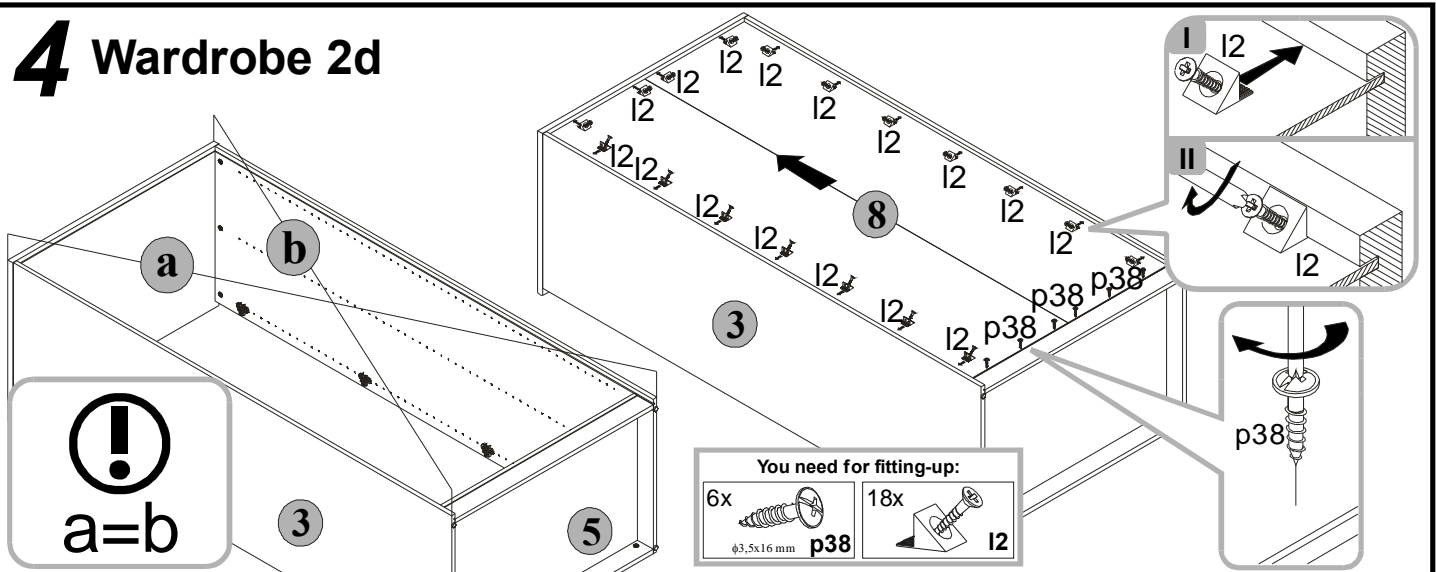
2 Wardrobe 2d



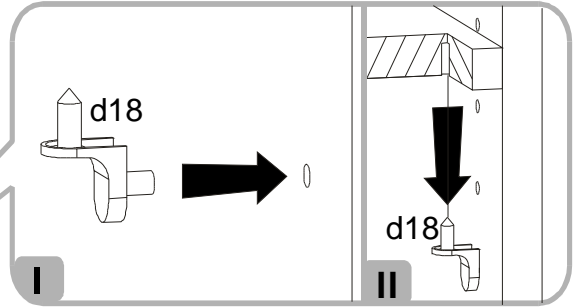
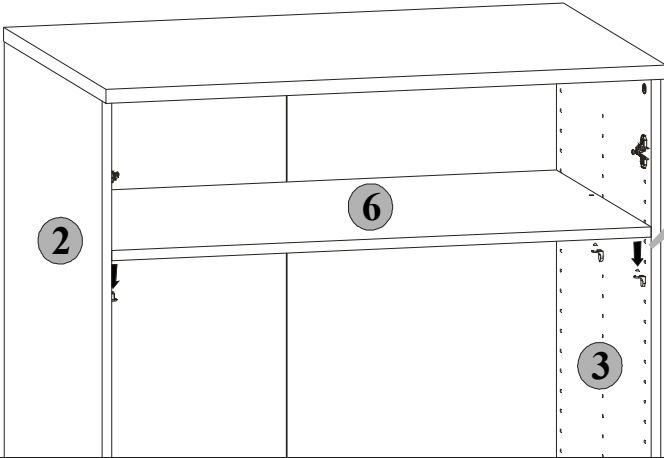
3 Wardrobe 2d



4 Wardrobe 2d



5 Wardrobe 2d

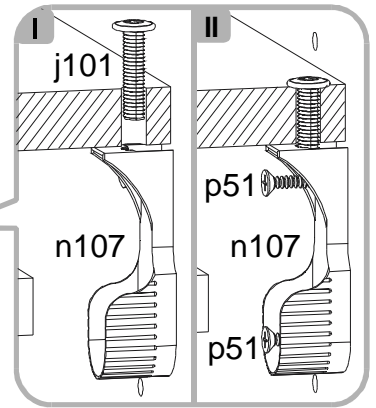
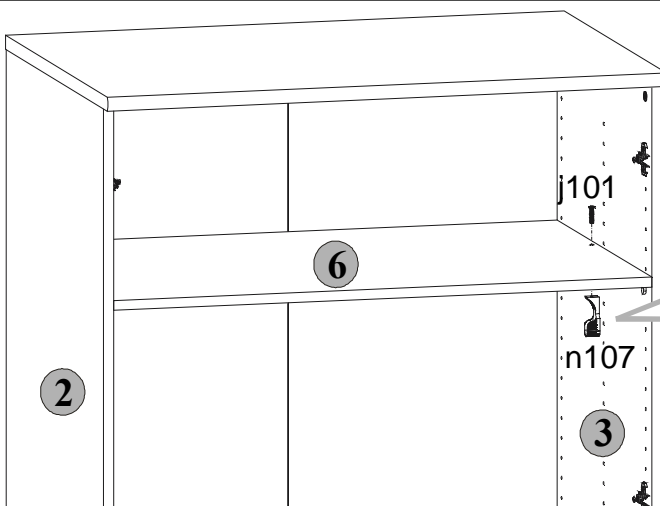
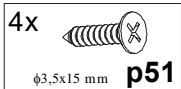
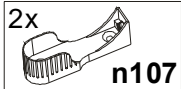


You need for fitting-up:

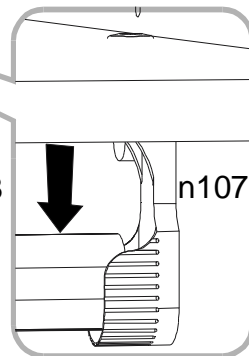
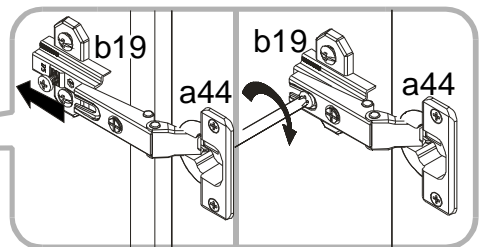
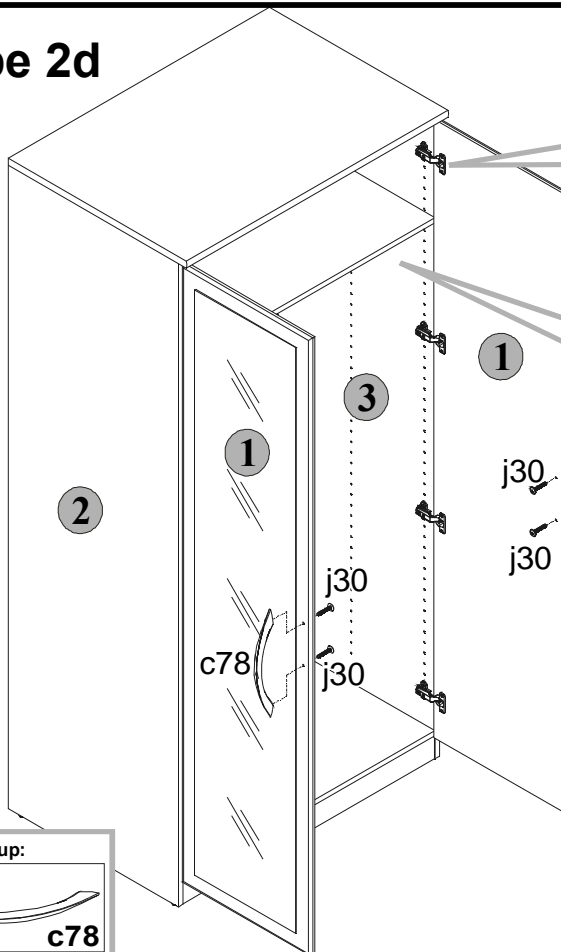


6 Wardrobe 2d

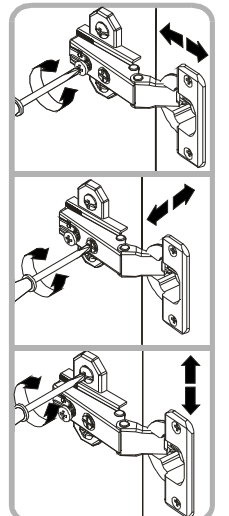
You need for fitting-up:



7 Wardrobe 2d



Adjustment of door



You need for fitting-up:

