

# FAMILY LINE

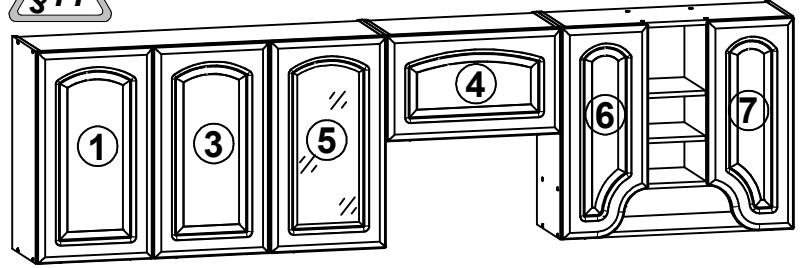
# K10-260 CLASSIC L/P-MELOS

## K10-260 CLASSIC P

A	B	C	D
1	TY_13001_002Z6	713	396 7/8, 8/8
2	TY_13001_003Z2	570	396 8/8
3	TY_13001_003Z6	713	396 7/8, 8/8
4	TY_13001_006Z3	355	596 7/8
5	TY_13901_003Z6	713	396 7/8
6	TY_13005_002Z11	713	296 7/8
7	TY_13006_003Z11	713	296 7/8
8	TY_13007_011Z1	620	396 8/8
9	TY_13008_012Z1	620	396 8/8
10	TY_13011_004Z2	140	396 8/8
11	TY_13012_009Z1	140	796 8/8

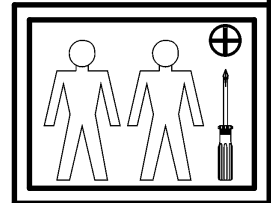
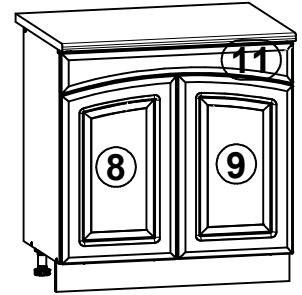
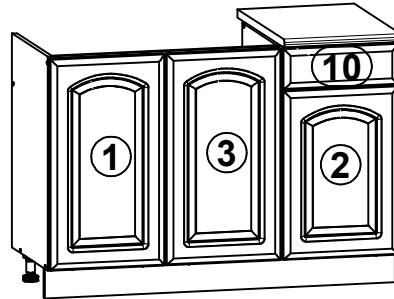


## K10-260 CLASSIC P

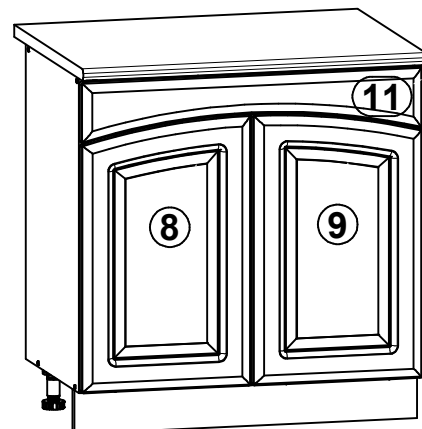
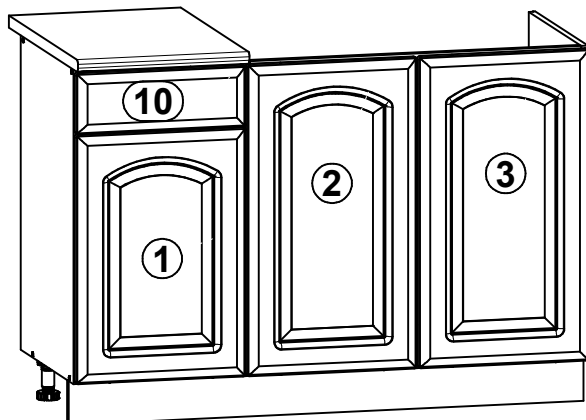
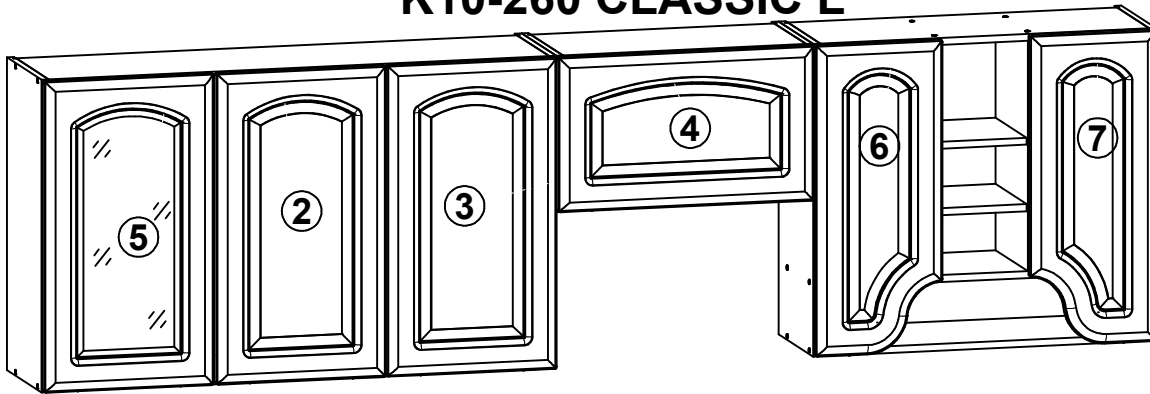


## K10-260 CLASSIC L

A	B	C	D
1	TY_13001_002Z2	570	396 8/8
2	TY_13001_002Z6	713	396 7/8, 8/8
3	TY_13001_003Z6	713	396 7/8, 8/8
4	TY_13001_006Z3	355	596 7/8
5	TY_13901_002Z6	713	396 7/8
6	TY_13005_002Z11	713	296 7/8
7	TY_13006_003Z11	713	296 7/8
8	TY_13007_011Z1	620	396 8/8
9	TY_13008_012Z1	620	396 8/8
10	TY_13011_004Z2	140	396 8/8
11	TY_13012_009Z1	140	796 8/8



## K10-260 CLASSIC L



**1** §2 §6 §11

